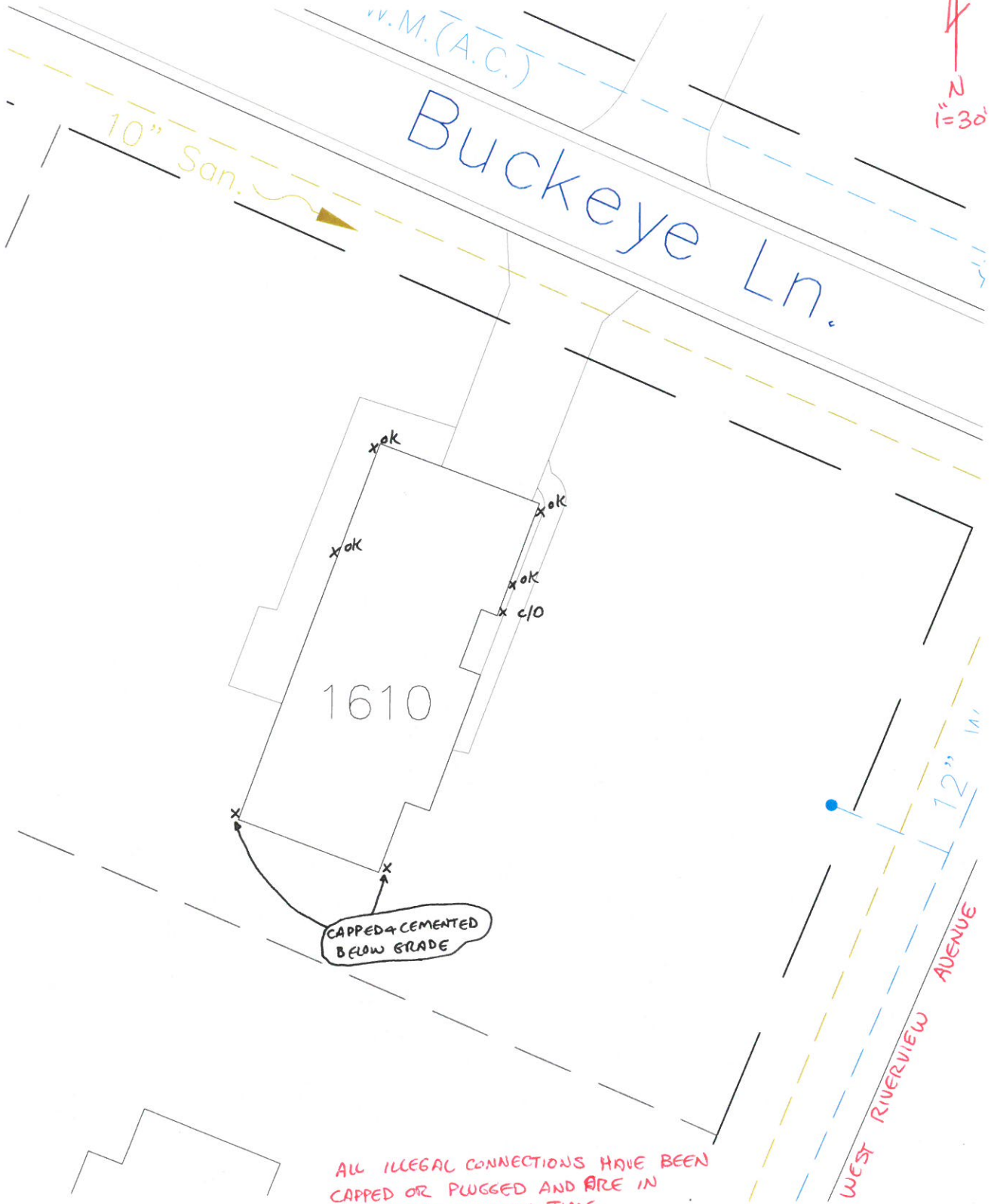


1610 WEST RIVERVIEW AVENUE
ILLEGAL DOWNSPOUT INVESTIGATION

INSPECTED BY: MARK SPIESS

2016



ALL ILLEGAL CONNECTIONS HAVE BEEN
CAPPED OR PLUGGED AND ARE IN
COMPLIANCE AT THIS TIME.